



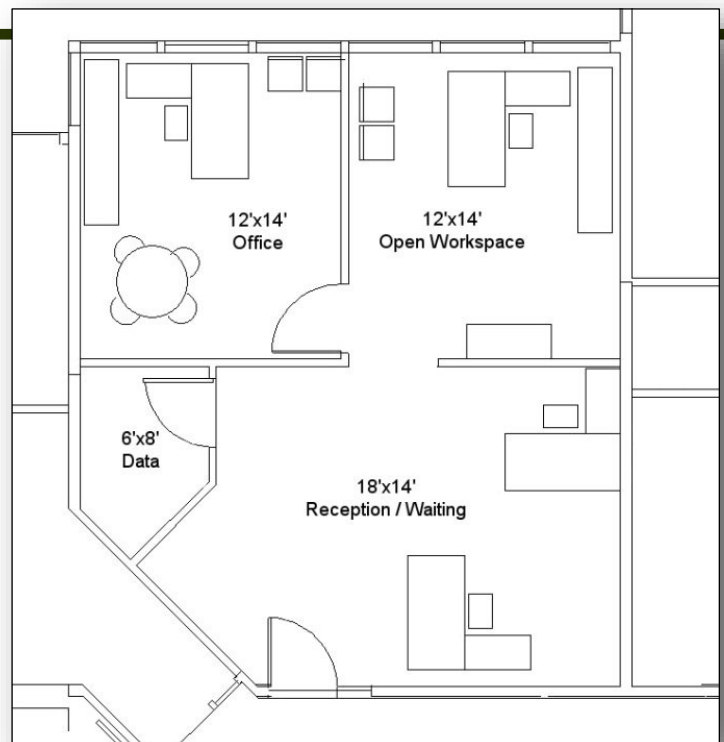
Parkwood
BUSINESS PROPERTIES

Office Space for Lease: 1110 W. Park Place, Suite 303 Coeur d'Alene, Idaho

- 640 square feet
- \$1,230 per month
- \$1.92 psf monthly
- Monthly amount includes all services except janitorial in the suite and telephone/data service.
- Suite includes two offices, large reception area and coffee bar.
- Excellent location just off Ironwood Dr.
- Located off a two story atrium with a slate water feature and glass elevator.



One of the nicest office buildings in town with an interior slate courtyard with skylights, granite pond, glass elevator and conference room. This two-story building is located just off Lakewood Dr., with easy access from both Ironwood Dr. and Northwest Boulevard. The building exterior is brick with reflective glass.



Jim Valle
208-667-4086
jvalle@parkwoodproperties.com