



Parkwood
BUSINESS PROPERTIES

Office Space for Lease: 1110 W. Park Place, Suite 308 Coeur d'Alene, Idaho

-750 square feet

-\$1,379 per month

-\$1.84 psf monthly

-All services are included for this office space except janitorial in the suite and telephone/data service.

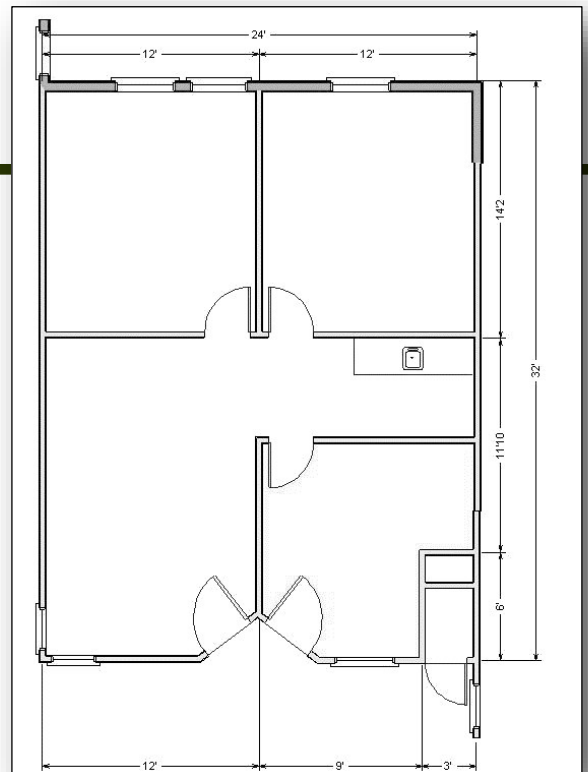
-Four room office suite with reception and three private offices.

-Suite includes a coffee bar.

-On same floor as common area conference room available at no charge.



One of the nicest office buildings in town with an interior slate courtyard with skylights, granite pond, glass elevator and conference room. This two-story building is located just off Lakewood Dr., with easy access from both Ironwood Dr. and Northwest Boulevard. The building exterior is brick with reflective glass.



Jim Valle
208-667-4086

jvalle@parkwoodproperties.com