

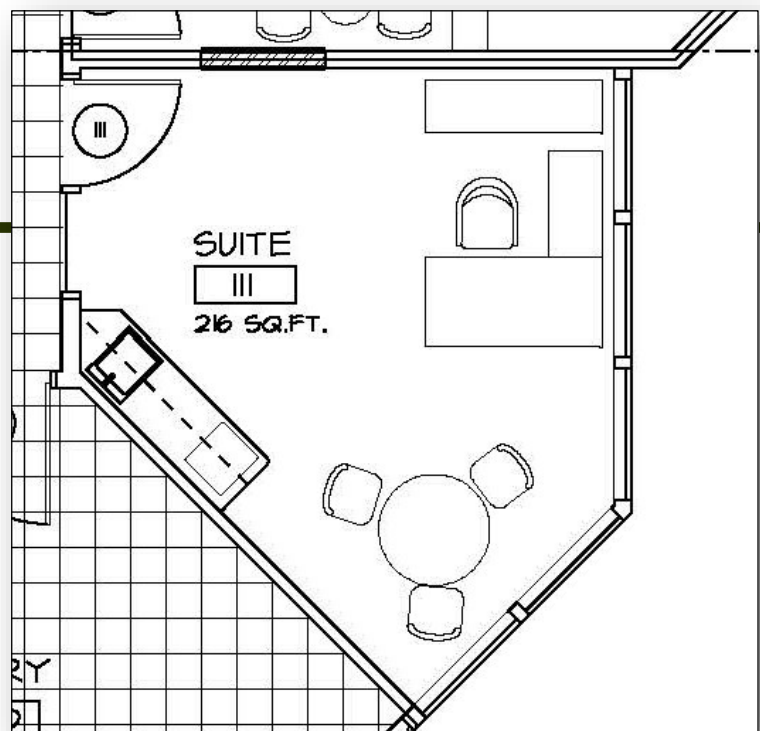


Office Space for Lease: 1250 Ironwood Drive, Suite 111 Coeur d'Alene, Idaho

- 216 square feet
- \$600 per month
- \$2.78 psf monthly
- Full service lease.
- Monthly amount includes all services except janitorial in the suite and telephone/data service.
- Great location near the corner of Ironwood Drive and NW Blvd. One block off I90!
- Brand new single room office with coffee bar.
- Fiber connectivity available.
- Floor to ceiling exterior windows.



One of the nicest office buildings in town with a skylighted three story interior courtyard, fountain, glass elevator and conference room! This large three-story office building is conveniently located in the Ironwood district with easy access to both the I-90/Northwest Boulevard interchange and U.S. 95. The building has a contemporary exterior with reflective glass.



Jim Valle
208-667-4086
jvalle@parkwoodproperties.com