



Parkwood  
BUSINESS PROPERTIES

## Office Space for Lease: 1110 W. Park Place, Suite 202 Coeur d'Alene, Idaho

-1,328 square feet

-\$3,100 per month

-\$2.33 psf monthly

-All services are included for this office space except janitorial in the suite and telephone/data service.

-Reception/waiting area, 5 private offices and break room.

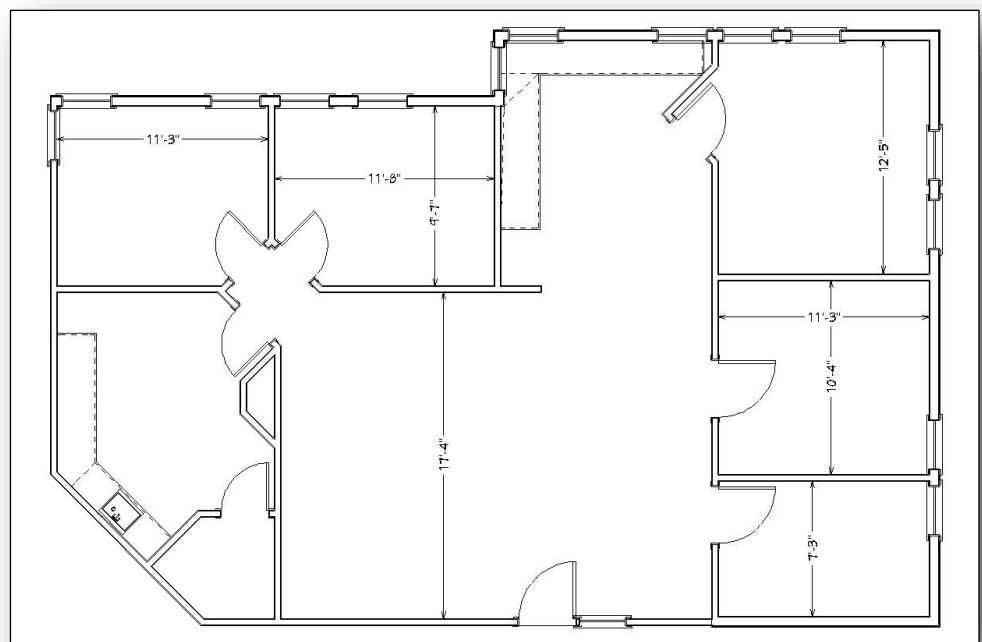
-Suite is a corner unit with windows for natural light and is just inside the main entry

-Building is an excellent location in a private setting yet right off Ironwood Drive.

-Generous parking



One of the nicest office buildings in town with an interior slate courtyard with skylights, granite pond, glass elevator and conference room. This two-story building is located just off Lakewood Dr., with easy access from both Ironwood Dr. and Northwest Boulevard. The building exterior is brick with reflective glass.



Jim Valle  
208-667-4086

jvalle@parkwoodproperties.com