



Parkwood
BUSINESS PROPERTIES

Office Space for Lease: 1110 W. Park Place, Suite 208 Coeur d'Alene, Idaho

-2,144 square feet

-\$5,000 per month

-\$2.33 psf monthly

-All services are included for this office space except janitorial in the suite and telephone/data service.

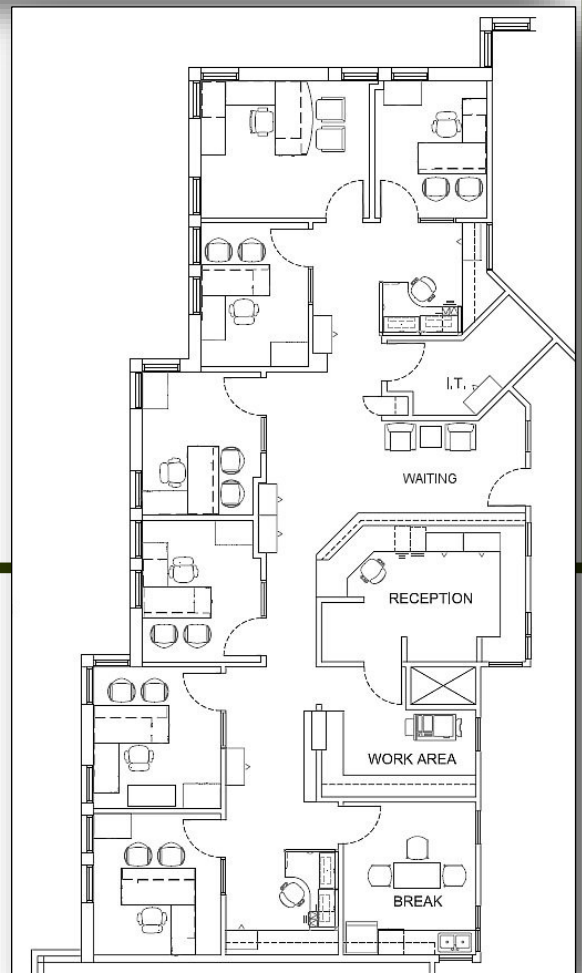
-Reception/waiting area, 7 private offices, break room and copy/work area.

-Suite is built out with upgraded finishes including 9 ft doors with wood trim and an abundance of glass allowing natural light.

-Building is an excellent location in a private setting yet right off Ironwood Drive.



One of the nicest office buildings in town with an interior slate courtyard with skylights, granite pond, glass elevator and conference room. This two-story building is located just off Lakewood Dr., with easy access from both Ironwood Dr. and Northwest Boulevard. The building exterior is brick with reflective glass.



Jim Valle
208-667-4086

jvalle@parkwoodproperties.com