



**Parkwood**  
BUSINESS PROPERTIES

## Office Space for Lease: 1110 W. Park Place, Suite 210 Coeur d'Alene, Idaho

-384 square feet

-\$1,120 per month

-\$2.92 psf monthly

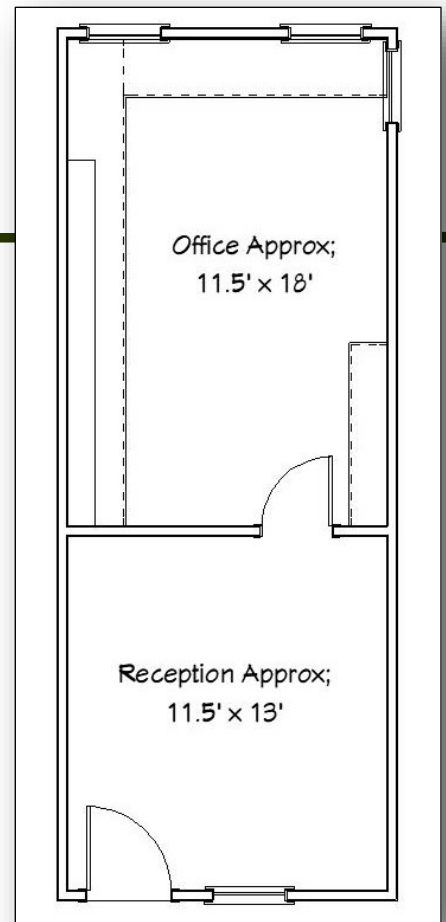
-All services are included for this office space except janitorial in the suite and telephone/data service.

- Two room office with reception/waiting area and private office.

-Building has shared conference room and two story atrium with granite fountain.



One of the nicest office buildings in town with an interior slate courtyard with skylights, granite pond, glass elevator and conference room. This two-story building is located just off Lakewood Dr., with easy access from both Ironwood Dr. and Northwest Boulevard. The building exterior is brick with reflective glass.



Jim Valle  
208-667-4086

[jvalle@parkwoodproperties.com](mailto:jvalle@parkwoodproperties.com)