



Parkwood
BUSINESS PROPERTIES

Office Space for Lease: 1110 W. Park Place, Suite 310 Coeur d'Alene, Idaho

-768 square feet

-\$1,800 per month

-\$2.34 psf monthly

-All services are included for this office space except janitorial in the suite and telephone/data service.

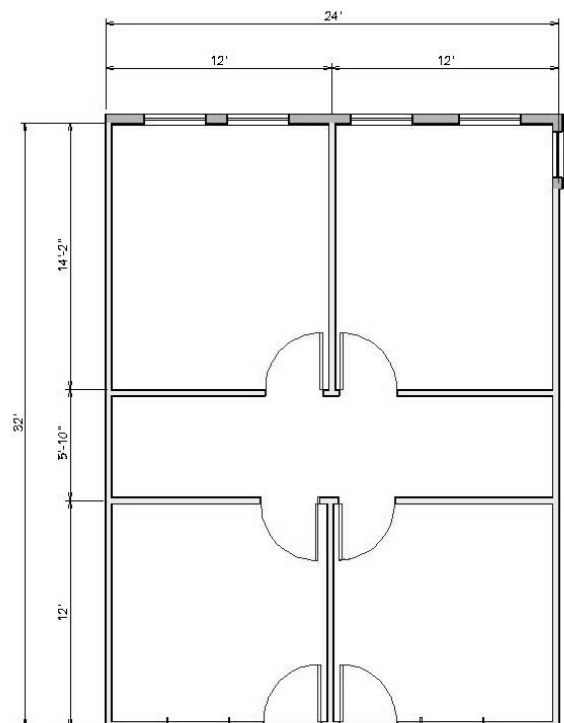
-Four room office suite with reception and three private offices.

-On same floor as common area conference room available at no charge.

-Transaction counter/window in reception area.



One of the nicest office buildings in town with an interior slate courtyard with skylights, granite pond, glass elevator and conference room. This two-story building is located just off Lakewood Dr., with easy access from both Ironwood Dr. and Northwest Boulevard. The building exterior is brick with reflective glass.



Jim Valle
208-667-4086

jvalle@parkwoodproperties.com